



# MONTHLY MEMBERSHIP PROGRESS REPORT

District 7 N

Results as of: 4/30/2017

GMT: HAL GRIFFIN

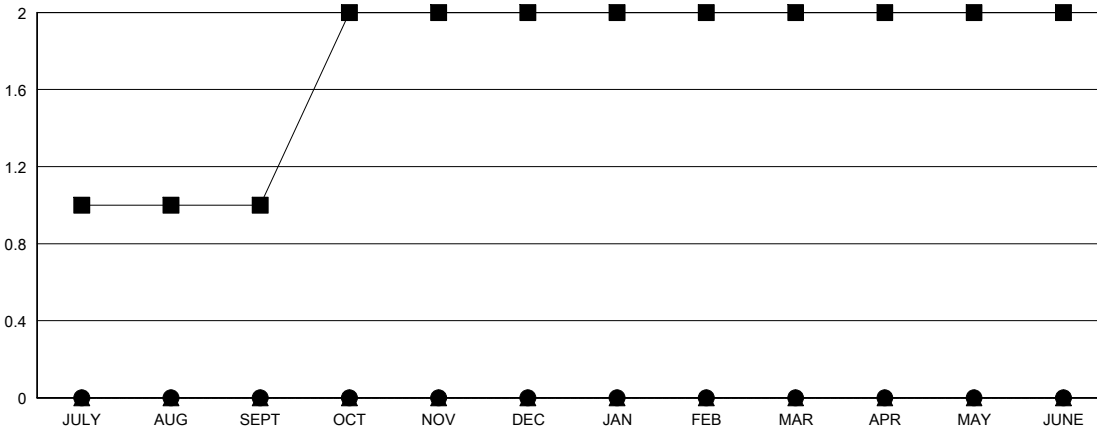
LOCATION ARKANSAS

GMT CA

Clubs			
RESULTS FOR 2016-2017			
QUARTER	NEW CLUB GOAL	NEW CLUBS	DROPPED CLUBS
JULY/AUG/SEPT	1	0	0
OCT/NOV/DEC	1	0	1
JAN/FEB/MAR	0	0	0
APR/MAY/JUNE	0	0	0

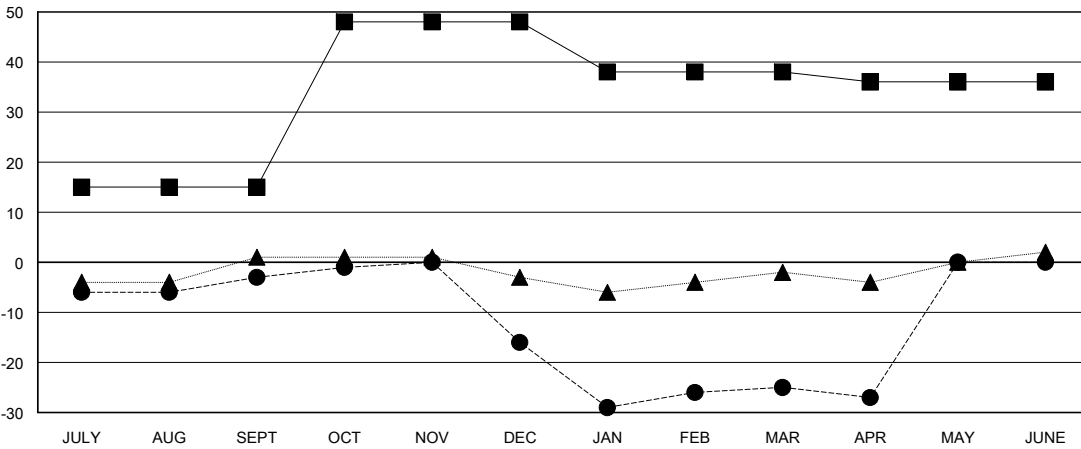
Members			
RESULTS FOR 2016-2017			
QUARTER	NEW MEMBER GROWTH NET GOAL (not reinstated or transfers)	NEW MEMBER GROWTH ACTUAL (not reinstated or transfers)	DROPPED MEMBERS ACTUAL (including transfers)
JULY/AUG/SEPT	15	13	16
OCT/NOV/DEC	33	11	24
JAN/FEB/MAR	-10	19	28
APR/MAY/JUNE	-2	4	6

GOALS AND ACTUAL NEW CLUBS CUMULATIVE



- - CURRENT YEAR GOALS FOR NEW CLUBS
- - CURRENT YEAR ACTUAL NEW CLUBS
- ▲ - LAST YEAR ACTUAL NEW CLUBS

GOALS AND ACTUAL MEMBERS CUMULATIVE



- - NEW MEMBER GROWTH NET GOAL
- - NEW MEMBER GROWTH ACTUAL
- ▲ - LAST YEAR MEMBERSHIP ACTUAL

DROPPED CLUBS: 1	
DROPPED MEMBERS	
DECEASED	7
CLUB CANCELLED	9
OTHER	58
<b>TOTAL</b>	<b>74</b>

18 CLUBS OF 34 ADDED 1 OR MORE NEW MEMBERS

[CLICK HERE FOR CUMULATIVE MEMBERSHIP DATA](#)

<u>GENDER DISTRIBUTION</u>	
MALE	448 (61.79%)
FEMALE	277 (38.21%)
TOTAL FAMILY UNIT MEMBERS	152
FAMILY MEMBERS PAYING HALF DUES	77